

Xpress™ CM100

Contactless Reader Module

Contactless Technology

The Xpress CM100 reads card data from a variety of contactless sources, including credit cards, key fobs, and NFC-enabled cell phones. It is designed for POS applications that accept contactless transactions, such as quick-service venues and self-service kiosks. Four LED indicators at the top of the module make it easy for cardholders to see that they have completed a successful card read operation.

Easy to Integrate

The Xpress CM100 is designed to allow flexibility of integration of EMV 2.0.1 contactless card reading to different market segments. With its modular architecture, the reader can be mounted to kiosks, attached to terminals, or used as a countertop standalone device. It is also possible to integrate the module with other payment technologies, such as MagStripe readers. The Xpress CM100 is an optional attachment for the ID TECH Sign & Pay terminal.

Versatility

The Xpress CM100 is perfect for a wide variety of applications, including quick service restaurants, ticket booths, parking garages, retail locations, public transportation, and gas stations. With support for Visa payWave, MasterCard PayPass, American Express ExpressPay, Discover Zip and MiFare and NFC technologies, the Xpress CM100 can be integrated into just about any application that accepts contactless technology.

Features and Benefits:

- Reads data from contactless cards, key fobs, and cell phones
- Compact design: Small footprint is ideal for flexible integration
- Complies with EMV Contactless 2.0.1
- Clear identification of successful card reads with LED indicators
- Compatible with ID TECH Sign & Pay terminal
- Certified by
 - Visa payWave
 - MasterCard PayPass
 - American Express ExpressPay
 - Discover card Zip

IDTECH®
Value through Innovation



Xpress™ CM100 Specifications IDCA-I261

Electrical

Power Requirements: +5 VDC
Interfaces: USB-HID

Environmental

Operating Temperature: -20°C to 70°C (-4°F to 158°F)
Storage Temperature: -40°C to 80°C (-40°F to 176°F)
Humidity: 10% to 95% non-condensing, dry storage

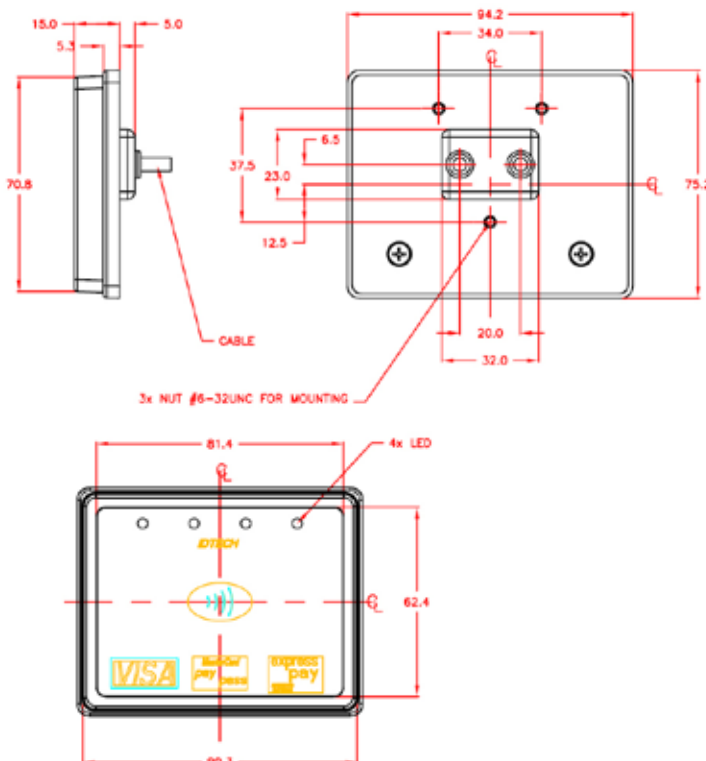
Reliability

Conformance: ISO 14443 Type A & B
Warranty: One year, parts and labor

Mechanical

Dimensions(L)x(W)x(H): 2.36 inches (60mm) x 3.15 inches (80mm) x 0.51 inches (13mm)
Weight: 1.92 oz. (4.78 oz. with cable)
Indicators: Four LED lights and beeper
Cable Length: 3 feet (0.91m)

Foot Print:



ID TECH®

Value through Innovation

Corporate Headquarters:

10721 Walker Street, Cypress, California 90630
www.idtechproducts.com
(714) 761-6368 sales@idtechproducts.com

International Sales Office

Canada & South America:

+450 465 5261 (Canada) robertop@idtechproducts.com

European Sales Offices:

+49(0) 8851 6159900 (Germany)
emea@idtechproducts.com

ISO 9001 Certified

Legacy Technology Services

We Rent & Sell All Types Of Barcode Equipment

Call now to talk to an expert

866-271-9891

www.LegacyGlobal.com

Some brands we carry



MOTOROLA

Intermec

DATALOGIC™

Honeywell

EQUINOX
PAYMENTS



About us

- Legacy Technology Services is a leading nationwide provider of mobile computing, barcode, printers and point of sale equipment and services.
- For over a decade, thousands of clients across North America have trusted us to provide equipment from leading manufacturers backed by the services to support them.

Latest Hardware from top manufacturers

- Legacy handles virtually every major manufacturer of mobile computing, barcoding and point of sale equipment.

Expert Repair and Maintenance services

- Legacy is one of the best repair facilities in North America

Discontinued product sourcing

- They don't make it anymore? Our inventory also includes manufacturer close-outs and discontinued equipment to support our clients legacy infrastructure.

Trade-in and Disposal services

- That old equipment laying around your facility may still have some value. Legacy routinely purchases equipment from our clients around the globe.
 - Data destruction
 - Hardware disposal
 - Auditing services

Dedicated client account team

- Dedicated, highly trained account managers are here to answer all your questions and provide top notch service.

Equipment rental services

- Sometimes renting is a better solution, Legacy's huge rental inventory provides the equipment you need for temporary needs and projects.



Legacy, Inc.

160 West Road,
Ellington, CT 06029

Toll Free: 866-271-9891

Fax: 888-522-4684